

INTERMEDIATE END LIMIT

- 1 MEMORIZING:** Reach the desired end limit and confirm the position by holding down the UP and STOP buttons simultaneously for 5 sec., until the feedback



- 2 MODIFYING:** Reach the new intermediate end limit and confirm the positioning by holding down the UP and STOP buttons simultaneously for 5 sec. until the feedback

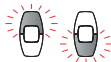


- 3 DELETING:** Reach the memorized intermediate end limit and delete it by holding down the UP and STOP buttons simultaneously for 5 sec. until the feedback



MODIFYING THE DOWN END LIMIT

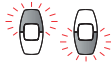
- 1** Reach the down end limit to be modified



- 2** Push the UP and DOWN buttons simultaneously and wait for the feedback



- 3** Reach the new end limit



- 4** Confirm the new end limit by pressing the STOP button



ADDING A TRANSMITTER

Transmitter already programmed



Transmitter to be programmed



DELETING A TRANSMITTER

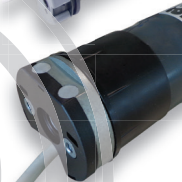
Transmitter already programmed (to be kept)



Transmitter already programmed (to be erased)



Radio tubular motor with 3 end limit switch specific for: cassette awnings



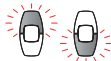
COUPLING TRANSMITTER WITH MOTOR

- 1 Push the UP and DOWN buttons simultaneously and wait for the feedback



DIRECTION OF MOTOR ROTATION ADJUSTMENT

- 2 Check rotating direction



- 2a If the rotation direction is correct, push the UP and DOWN buttons simultaneously and wait for the feedback



If the rotation direction is wrong, reverse it by holding down the STOP button for 2 sec. until the feedback



- 2b Check the rotation direction again



Confirm the rotation direction by pushing the UP and DOWN buttons simultaneously until the feedback



WARNING: if rotation direction is not confirmed, it will not be possible to carry out the following programming steps

MOTOR END LIMITS ADJUSTMENT

ATTENTION: closely adhere to the procedure, the UP end limit is set automatically

- 3 Reach the DOWN end limit



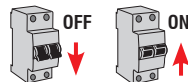
- 4 Confirm the DOWN end limit holding down the button until feedback is given



End of programming

RESET

Switch off the power supply and then restore



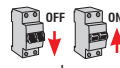
MOTOR FEEDBACK
THE MOTOR
IS NOT PROGRAMMED

Carry out the
programming procedure



NO MOTOR FEEDBACK
THE MOTOR
IS ALREADY PROGRAMMED

Cancel programming:
a) Switch off the power supply for 5 sec
b) Switch on the power supply



Push the three buttons simultaneously and wait for the feedback



Hold down for 7 sec until you achieve 2 feedbacks